

LED430-66-60 epoxy lens type BLUE color illuminator

LED430-66-60 is a wide viewing and extremely high output power illuminator assembled with a total of 60 high efficiency InGaN diode chips, mounted on a metal stem TO-66 with AlN ceramics and covered with double coated clear silicone and epoxy resin.

These devices are designed for high current operation with proper heat sinking to improve thermal conductive efficiency.

Features

- 1) High reliability
- 2) Compact (TO-66) package
- 3) High output power at 430 nm

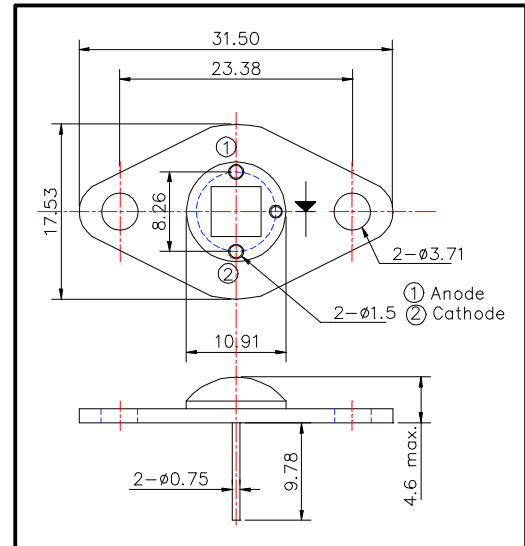
Applications

- 1) For high intensity lighting source

Specifications

- | | |
|---------------------|-------------------------------|
| 1) Product name | Blue color illuminator |
| 2) Spec. No. | LED430-66-60 |
| 3) Chip | |
| (1) Material | InGaN |
| (2) Peak wavelength | 430 nm |
| 4) Package | |
| (1) Stem | TO-66 stem with AlN |
| (2) Lens | Clear silicone and epoxy lens |

Outer dimension (Unit: mm)



Absolute Maximum Ratings

| Item | Symbol | Maximum Rated Value | Unit | Ambient Temp. |
|-----------------------|------------------|---------------------|------|----------------------|
| Power Dissipation | P _D | 8.5 | W | T _a =25°C |
| Forward Current | I _F | 400 | mA | T _a =25°C |
| Pulse Forward Current | I _{FP} | 2000 | mA | T _a =25°C |
| Reverse Voltage | V _R | 50 | V | T _a =25°C |
| Operating Temperature | T _{OPR} | -30 ~ +80 | °C | |
| Storage Temperature | T _{STG} | -30 ~ +110 | °C | |
| Soldering Temperature | T _{SOL} | 240 | °C | |

‡ Pulse Forward Current condition: Duty=1% and Pulse Width=1us.

‡ Soldering condition: Soldering condition must be completed within 3 seconds at 260°C

Electro-Optical Characteristics

| Item | Symbol | Condition | Minimum | Typical | Maximum | Unit |
|----------------------|------------------|-----------------------|---------|---------|---------|-------|
| Forward Voltage | V _F | I _F =240mA | | 19.5 | | V |
| Brightness | I _V | I _F =240mA | | 360 | | mcd |
| Total Radiated Power | P _O | I _F =240mA | | 14 | | mW |
| Radiant Intensity | I _E | I _F =240mA | | 4.6 | | mW/sr |
| Reverse Current | V _R | I _R =10uA | 50 | | | V |
| Peak Wavelength | I _P | I _F =240mA | 415 | 430 | 445 | nm |
| Half Width | DI | I _F =240mA | | 50 | | nm |
| Viewing Half Angle | Q _{1/2} | I _F =240mA | | ±60 | | deg. |

‡ Heat sink is required thermal resistance <8K/W

ROITHNER LASERTECHNIK, A-1040 Vienna, Austria, Schoenbrunner Strasse 7
 Tel.: +43-1-586 52 43 - 0, Fax.: +43-1-586 52 43 44
 e-mail: office@roithner-laser.com, http://www.roithner-laser.com