

LED435-66-60 epoxy lens type blue-violet color illuminator

LED435-66-60 is a wide viewing and extremely high output power illuminator assembled with a total of 60 high efficiency InGaN diode chips, mounted on a TO66 metal stem with AlN ceramics and covered with double coated clear silicone and epoxy resin. These devices are designed for high current operation with proper heat sinking to improve thermal conductive efficiency.

Features

High reliability
Compact TO66 package
High output power at 435 nm

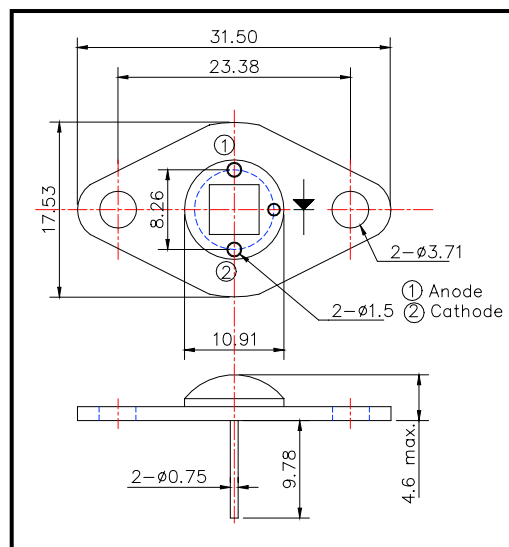
Applications

High intensity lighting source

Specifications

Product name	blue-violet illuminator
Spec. No.	LED435-66-60
Chip	
Material	InGaN
Peak wavelength	435 nm
Package	
Stem	TO-66 stem with AlN
Lens	clear silicone and epoxy lens

Outer dimension (Unit: mm)



Absolute Maximum Ratings

Item	Symbol	Maximum Rated Value	Unit	Ambient Temp.
Power Dissipation	P _D	8.0	W	T _a = 25° C
Forward Current	I _F	400	mA	T _a = 25° C
Pulse Forward Current	I _{FP}	2000	mA	T _a = 25° C
Reverse Voltage	V _R	50	V	T _a = 25° C
Operating Temperature	T _{OPR}	-30 ~ +80	°C	
Storage Temperature	T _{STG}	-30 ~ +110	°C	
Soldering Temperature	T _{SOL}	240	°C	

‡Pulse Forward Current condition: Duty = 1% and Pulse Width = 1 μs.

‡Soldering condition: Soldering condition must be completed within 3 seconds at 260°C

Electro-Optical Characteristics

Item	Symbol	Condition	Minimum	Typical	Maximum	Unit
Forward Voltage	V _F	I _F = 240 mA		18.0		V
Brightness	I _V	I _F = 240 mA	-	-	-	mcd
Total Radiated Power	P _O	I _F = 240 mA	650	720	750	mW
Radiant Intensity	I _E	I _F = 240 mA	-	-	-	mW/sr
Reverse Current	I _R	U _R = 50 V	50	10		μA
Peak Wavelength	λ _P	I _F = 240 mA	430	435	440	nm
Half Width	Δλ	I _F = 240 mA		30		nm
Viewing Half Angle	2θ _{1/2}	I _F = 240 mA		±60		deg.

‡Heat sink is required thermal resistance <8 K/W