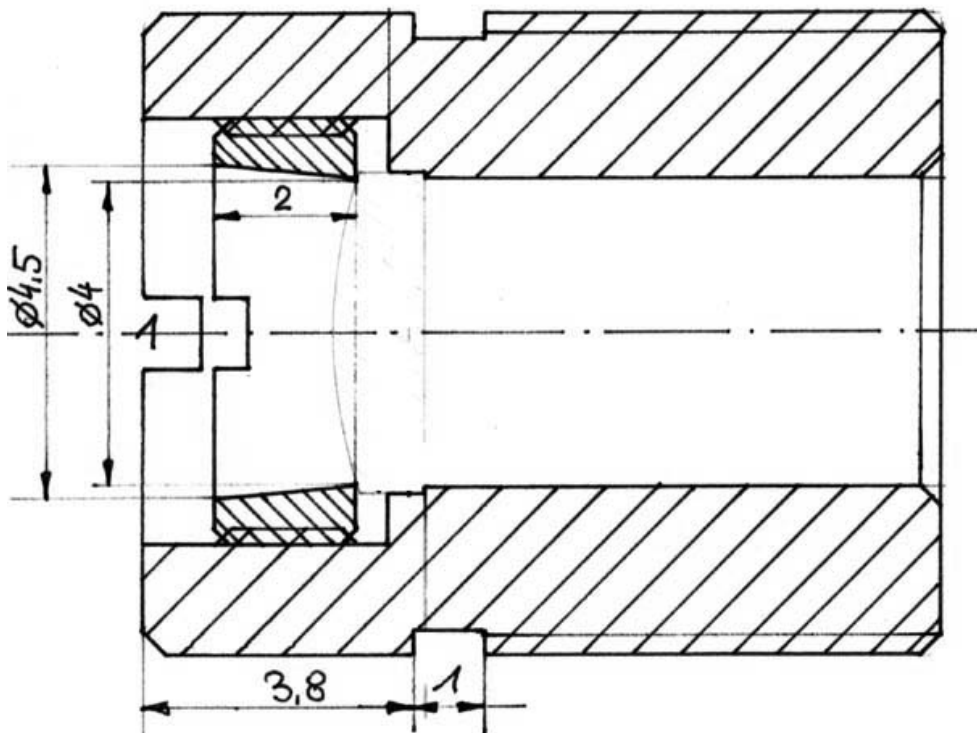


# LENS-11

## LASERDIODE COLLIMATOR

### TECHNICAL DATA:

- $f = 12.0 \text{ mm}$
- $\text{N.A.} = 0.17$
- 1 glass lens
- designed for  $633 \text{ nm} \pm 30 \text{ nm}$
- dimension:  $11.3 \times \varnothing 9 \text{ mm}$ ,  $M 9 \times 0.5 \text{ mm}$
- black aluminium
- divergence:  $2 \text{ mrad}$
- near round beam profile



### **ROITHNER LASERTECHNIK**

A-1040 VIENNA, SCHOENBRUNNER STRASSE 7, AUSTRIA

TEL: +43 -1- 586 52 43-0 FAX: +43 -1- 586 52 43-44

e-mail: [office@roithner-laser.com](mailto:office@roithner-laser.com) <http://www.roithner-laser.com>